

EDUCATION IMPROVEMENT RESEARCH CENTRE

TARGETING RESOURCES FOR IMPACT ON STUDENT LEARNING



Insights paper at a glance

Strategies for targeting resources

Aligning resources with school priorities and student need

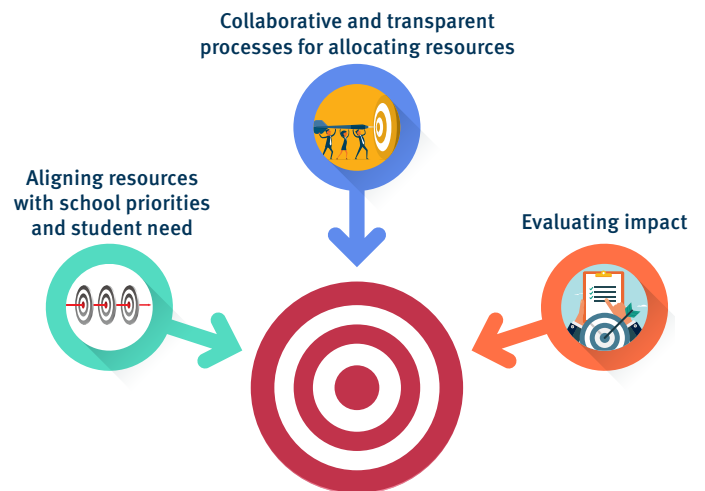
- Think long-term, act short-term. Align expenditure with the explicit improvement agenda, annual implementation plan and whole-school priorities and targets.

Collaborative and transparent processes

- Work together to identify and implement key priorities.
- Develop and strengthen transparent decision-making processes.
- Ensure processes are inclusive and clearly communicated to the school community.

Evaluating impact

- Systematically review, monitor and measure the impact of investments to support student learning and wellbeing.
- Review processes to ensure funding is targeting the needs of all students.



Common focus areas for resourcing

Investing in staff capability

- Provide opportunities and funding for professional development.
- Use a workforce plan to help direct resources.
- Align staff expertise with identified student needs.

Investing in infrastructure

- Invest in the school's infrastructure within a long-term plan, including facilities, ICT and STEM resources.

Let's talk

- How are investments strategically aligned to our school's explicit improvement agenda?
- What collaborative and transparent processes support the identification of needs and priorities for resource allocation in our school?
- How does our school monitor and evaluate the impact of resources on student outcomes?

To read the full insights paper, scan the QR image or go to:
schoolreviews.education.qld.gov.au/research-and-reports



Queensland
Government