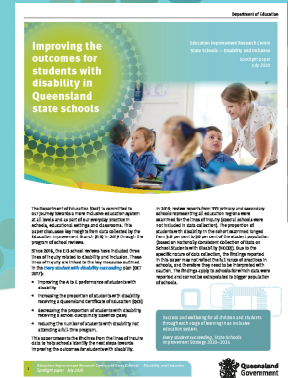


Improving the outcomes for students with disability in Queensland state schools

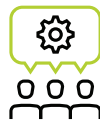


'We must provide all young Australians with equality of opportunity that enables them to reach their potential and achieve their highest educational outcomes.' Alice Springs (Mparntwe) Education Declaration, December 2019

Maximising student success and wellbeing



Know your students



Collaborate with parents and carers



Respond to data and measure impact

Moving from monitoring to success

Reflections

Know your students

- How do our students with disability learn?
- How are they progressing alongside their peers?
- How is their voice incorporated in data?
- How do we know?



Make it happen

- Clarify roles and build collective ownership for student outcomes
- Use data to plan and implement tailored strategies for teaching and learning supported by resources
- Build staff capability to collaboratively analyse and interpret data

Collaborate with parents and carers

- How do we value parents' and carers' knowledge of their child in the learning process?
- Are relationships with parents and carers effective? How do we know?



- Build tailored communication strategies with parents and carers
- Involve parents and carers when developing personalised strategies and plans for their child
- Develop whole-school practices that support parent-teacher partnerships

Respond to data and measure impact

- Is whole-school planning and practice informed by what we know about students with disability?
- Are our teaching strategies agile and individualised?
- How do we know we are making a difference for all students and for each student?



- Use data to inform curriculum decisions including access to learning
- Collaboratively evaluate the impacts of teaching practices and support
- Review teaching and support decisions accordingly



To read the full report, scan the QR image or go to: schoolreviews.education.qld.gov.au/research-and-reports

